



RAYLEIGH

POLL HEREFORDS

EST. 1957

8TH ANNUAL ON PROPERTY BULL SALE AND OPEN DAY

Friday 14th July 2017

Inspections - 10am • Sale Starts - 1pm

Jeff & Robyn Holcombe

“Rayleigh”, Burren Junction • P. 0427 285 226 • (02) 6828 5226

Email: rayleigh8@bigpond.com

Selling Agent: Bruce Evans - Landmark Phone: 0428 921 599

Stud Stock Agent: John Settree Phone: 0408 297 368



CELEBRATING
60 Years
OF BREEDING QUALITY
POLL HEREFORD CATTLE AT RAYLEIGH

STUD HISTORY

Rayleigh Poll Hereford Stud was established in 1957 with Hereford cows from Lomani and Dalkeith. Cows from Debarry, Margfred Park, Glencoe, Cannawigra and several other studs have been added since. The majority of our cows still descend from these foundation females, as these lines have proven so reliable in their performance and predictability.

In the past few years a number of new sires have been added to our program. The Ranch Marksman H14, Injemira Anzac H003, Mountain Valley Karabar K203, Days Robin Hood J183 and Bowen Calibre K207. We believe that each of these bulls has the ability to add some extra performance into our cattle, whilst maintaining the fundamental principles on which our program is based. To date we are very pleased with the performance of these sires, as well as the outlook of their progeny. Some progeny will be on display on sale day.

BREEDING PHILOSOPHY

The aim of the Stud has always been to breed functional and efficient cattle, which are noted for their ability to fatten on pasture and carry themselves through tough times. Structural soundness, doing ability and natural muscling are three main attributes we keep at the forefront of our program to ensure this vision is met. Breedplan is used as an additional tool to assess and improve overall performance, as well as optimise milking and calving ability in our program. We are very proud of this year's sale line up, and believe them to be representative of this vision.

Maintaining productivity and fertility in dry times is something we are heavily focused on at Rayleigh. Being from a marginal climate our cattle are well accustomed to semi-arid type pastures. This allows for our bulls to be well adapted, low fuss and ready to work under a variety of conditions.

This years sale bulls are sired by Rayleigh Hercules H24, Yavenvale Benchmark B278, Injemira Anzac H003 and The Ranch Marksman H14. All bulls are 7 in 1, Pestiguard and Vibrio vaccinated, semen, morphology and soundness tested.

SALE INFORMATION

- Location: Rayleigh Poll Hereford Stud, 35kms west of Burren Junction & 60kms east of Walgett on the Kamillaroi Highway.
- GST is to be added onto the purchase price at the fall of the auctioneer's hammer. You will be invoiced purchase price plus GST.
- Rebate: 2% rebate will be offered to outside Agents introducing buyers in writing 24 hours prior to the Sale and attending the sale with the client.
- Sale will be conducted using the Helsman System.
- Inspection may be arranged prior to sale day by contacting the vendors or selling agents. All cattle will be available for inspection from 10am on Sale Day.
- Delivery: Free delivery is available up to 200kms. Delivery can be given at the completion of the sale. All care will be taken of the cattle prior to delivery however no responsibility will be accepted.
- A Buyer's Instruction Slip must be completed by the Purchaser or representative and handed to the Auctioneers prior to leaving the sale. No verbal instructions will be accepted.
- Insurance: There is no vendor insurance on sale bulls. It will be the responsibility of the purchasers to insure their bulls. Insurance representatives will be in attendance at the sale and can offer insurance terms on sale bulls.
- Fertility: Bulls have been tested for semen and soundness and have passed.
- Accommodation can be arranged by contacting the selling agents. Free lunch and refreshments will be available prior to sale.

Disclaimer

Whilst all due care and attention has been paid to the accuracy in the compilation of this catalogue, neither the vendor nor selling agents or representatives therefore assume any responsibility whatsoever for the correctness, use or interpretation of the information on animals included in this catalogue. Potential buyers are advised to inspect animals prior to sale.

BREEDPLAN EXPLAINED

Breedplan is a performance evaluation program that compares bulls “on a level playing field” for a number of important commercial traits.

The difference between a bull’s genetics and the breed benchmark for a range of traits is reported as an **Estimated Breeding Value (EBV)** - an estimate of how a bull will perform as a parent rather than how he looks on the day.

EBV’s can be positive or negative, ie above or below the breed benchmark of zero.

EBV’s are calculated from the available performance information on the animal, its parents, progeny and its close relatives within the breed.

The information is adjusted for age, dam age and for differences between herds, years, season of calving, management effects and for mating and selection biases. The heritability of the trait is also taken into account.

Birth Weight - The lower the birth weight EBV, the lighter is the birth weight potential of the progeny.

200 Day Weight - Indicates the relative weight advantage of a sire at 8-10 months of age.

400 Day Weight - Indicates the relative weight advantage of a sire at yearling age.

600 Day Weight - Indicates the relative weight advantage of a sire beyond yearling age. This EBV is important if selecting sires to breed steers for grain fed export markets.

Genetic Milk - Reflects extra calf weight at weaning due to the genetic influence a sire has on his daughters milking and mothering ability.

EMA - Bulls with positive EBV’s for this trait are expected to produce more muscular progeny than bulls with negative EBV’s.

Fat Depth - Bulls with negative EBV’s for this trait are expected to produce leaner progeny than will bulls with positive EBV’s

Intra-muscular Fat Percent - Estimates the genetic difference in the percentage of intra-muscular fat at the 12/13th rib site in a 300kg carcass. Positive values are generally more favourable.

Scrotal Size - This EBV is an indicator of male fertility in regards to semen quality and quantity. Higher EBV’s indicate higher fertility potential of male progeny and is positively correlated to age of puberty in daughters.

Mature Cow Weight (MCW) - Is an estimate of the difference in cow (daughters) weight at calf weaning time and is an indicator of mature cow size and potential feed maintenance requirements.

Carcass Weight (CW) - Estimates difference in carcass weight at a standard 650 days of age.

BREED AVERAGE - To aid in your interpretation of the GROUP BREEDPLAN EBV’S in this catalogue please find below the Breed Average EBV’s for the 2014 drop calves.

BW	200	400	600	MCW	MILK	SS	CW	EMA	RIB	RUMP	RBY%	IMF%
+4.8	+31.4	+50.5	+72	+67.1	+13.4	+1.8	+45.4	+3.2	+0.3	+0.3	+0.9	+0.3

The Group Breedplan Estimated Breeding Values contained in this catalogue were supplied by the Agricultural Business Research Institute from data supplied by the breeders. Neither Herefords Australia Limited nor the ABRI oversee or audit the collection of this data. Log on to www.herefordsaustralia.com.au for a full description and explanation of all Breedplan, EBVs, Accuracies, Selection Indexes and Comparing Animals.

Landmark Narrabri, proud to be conducting the Rayleigh Poll Hereford Bull Sale

Livestock:	Bruce Evans Matt Collett	0428 921 599 0427 311 415
Real Estate:	Paul Thomas James Thomas	0429 921 599 0418 975 048
Merchandise:	Geoff Brown (Mng) Alistair Geddes Mick Brown	0429 395 776 0428 542 772 0477 308 088
Agronomy:	Hamish Murray	0427 704 124
Insurance:	Annette Cruikshank	0429 988 130
Administration:	Sandra Shepherd Jenny Mapstone	02 6799 1111



Sale Interfaced Online with



AuctionsPlus™



Lot 1 RAYLEIGH LARRIKIN L75 (P)

Tattoo: L75

Rego No: AHCL75

Born: 01/06/2015

KARINA CHERRY Z8 (P)

TYCOLAH H-BOMB (P)

TYCOLAH DIANA U52 (TW) (P)

Sire: **THE RANCH MARKSMAN H14 (P)**

BOWEN VINCENT V1 (S)

THE RANCH DUCHESS A37 (AI) (P)

THE RANCH DUCHESS X35 (P)

SOUTH BUKALONG WALLACE 2 (P)

YAVENVALE BENCHMARK B278 (P)

YAVENVALE MISS MINERVA W051 (AI) (H)

Dam: **RAYLEIGH O BELLA G101 (P)**

COURALLIE WALLABY (AI) (H)

TOOLANGATTA W13 TEHRESA Z002 (P)

TOOLANGATTA U101 THERESA W408 (AI) (P)

May 2017 Hereford GROUP BREEDPLAN

BW	200	400	600	MCW	Milk	SS	Cwt	EMA	Rib	RUMP	RBY%	IMF%
+5.0	+32	+52	+74	+60	+15	+2.1	+43	+3.6	+0.8	+1.2	+0.9	+0.7
69%	62%	60%	64%	54%	36%	64%	50%	40%	43%	47%	42%	41%
Selection Index Values:			S/Market: +\$94			Grass Fed Steer: +\$91			Grain Fed Steer: +\$109		EU: +\$106	

Traits Observed: CE,BWT,600WT,SS,FAT,EMA,IMF

Notes: FEATURE LOT. This is a structurally sound young sire, with loads of length and depth. A very even bull from front to back with a great muscle pattern, doing ability and well laid in shoulders. TOP SIRE POTENTIAL. Scurred, EP 100/100.

Purchaser:

Price \$:.....

Lot 2 RAYLEIGH LANDROVER L88 (P)

Tattoo: L88

Rego No: AHCL88

Born: 15/06/2015

REMITALL KEYNOTE 20X (IMP CAN) (P)

REMITALL BOOMER 46B (IMP CAN) (P)

REMITALL SALLY S LASS ET 120X (P)

Sire: **RAYLEIGH HERCULES H24 (AI) (P)**

DAVANGER UPSTART (AI) (P)

RAYLEIGH M UABBA Y47 (TW) (P)

RAYLEIGH LADY 7 Q112 (P)

ALLENDALE OVERTON (P)

ALLENDALE POSEIDON Z110 (P)

ALLENDALE FANCY T24 (P)

Dam: **RAYLEIGH L POSIE C77 (TW) (P)**

RAYLEIGH STARMAKER S76 (P)

RAYLEIGH SUZIE 8 V40 (P)

RAYLEIGH FELICITY 3 L15 (P)

May 2017 Hereford GROUP BREEDPLAN

BW	200	400	600	MCW	Milk	SS	Cwt	EMA	Rib	RUMP	RBY%	IMF%
+3.8	+24	+36	+50	+54	+9	+0.2	+30	+2.2	-0.9	-1.8	+0.9	-0.7
68%	62%	61%	65%	55%	46%	63%	52%	41%	45%	49%	44%	43%
Selection Index Values:			S/Market: +\$38			Grass Fed Steer: +\$32			Grain Fed Steer: +\$24		EU: +\$44	

Traits Observed: CE,BWT,600WT,SS,FAT,EMA,IMF

Notes: Potentially the strongest Rayleigh Hercules son offered to date. This bull is structurally very sound, with some extra length and lift. Great spring of rib, muscle pattern and eye placement. Out of an exceptional old cow. Scurred, EP 100/100.

Purchaser:

Price \$:.....

Lot 3 RAYLEIGH ELWYN (P)**Tattoo: L1****Rego No: AHCL1****Born: 12/04/2015**

KARINA CHERRY Z8 (P)
 TYCOLAH H-BOMB (P)
 TYCOLAH DIANA U52 (TW) (P)

Sire: THE RANCH MARKSMAN H14 (P)

BOWEN VINCENT V1 (S)
 THE RANCH DUCHESS A37 (AI) (P)
 THE RANCH DUCHESS X35 (P)

BOWEN VINCENT V1 (S)
 DEBARRY TRIBULUS 2 (P)
 DEBARRY TABITHA V48 (ET) (P)

Dam: RAYLEIGH S TIFFANY C83 (P)

EVESHAM KYLBURN (AI) (ET) (S)
 RAYLEIGH S KYLIE 8 W57 (P)
 RAYLEIGH ELLIE 18 R16 (P)

May 2017 Hereford GROUP BREEDPLAN

BW	200	400	600	MCW	Milk	SS	Cwt	EMA	Rib	RUMP	RBY%	IMF%
+5.5	+31	+55	+79	+81	+12	+1.2	+46	+2.9	-1.3	-2.2	+2.1	-0.4
59%	60%	64%	69%	59%	39%	71%	56%	45%	50%	54%	48%	47%
Selection Index Values:		S/Market: +\$71		Grass Fed Steer: +\$64			Grain Fed Steer: +\$65			EU: +\$82		

Traits Observed: 600WT,SS,FAT,EMA,IMF

Notes: FEATURE LOT. A standout since birth. This bull has a tonne of performance, with length, depth and natural thickness. A very mobile bull suitable for any operation. TOP SIRE POTENTIAL. EP 100/100.

Purchaser:

Price \$:

Lot 4 RAYLEIGH LOYAL L121 (P)**Tattoo: L121****Rego No: AHCL121****Born: 20/08/2015**

KARINA CHERRY Z8 (P)
 TYCOLAH H-BOMB (P)
 TYCOLAH DIANA U52 (TW) (P)

Sire: THE RANCH MARKSMAN H14 (P)

BOWEN VINCENT V1 (S)
 THE RANCH DUCHESS A37 (AI) (P)
 THE RANCH DUCHESS X35 (P)

MERAWAH SURVIVOR T6 (AI) (P)
 COLUMBIAN SURVIVOR W45 (P)
 COLUMBIAN M20 DEW DROP P017 (P)

Dam: RAYLEIGH J SHAMROCK Z18 (P)

BOBANKEN FEARLESS 2 (P)
 RAYLEIGH FELICITY 26 N56 (P)
 RAYLEIGH PANDORA 63 (P)

May 2017 Hereford GROUP BREEDPLAN

BW	200	400	600	MCW	Milk	SS	Cwt	EMA	Rib	RUMP	RBY%	IMF%
+4.4	+28	+48	+66	+64	+10	+1.1	+40	+2.8	-0.1	+0.0	+0.8	+0.0
58%	59%	61%	65%	56%	43%	67%	53%	42%	46%	51%	45%	44%
Selection Index Values:		S/Market: +\$69		Grass Fed Steer: +\$64			Grain Fed Steer: +\$69			EU: +\$78		

Traits Observed: CE,600WT,SS,FAT,EMA,IMF

Notes: FEATURE LOT. The second youngest bull in the sale, out of one of our oldest and best performing females. This bull oozes appeal from front to back, demonstrating excellent mobility, length of neck and quarter. Structurally a very sound bull, who is packed with carcase and natural thickness. A strong sires head with hooded eye. TOP SIRE POTENTIAL. EP 100/100.

Purchaser:

Price \$:



SPECIALISING IN

✦ **QUALITY** ✦ **LOW COST**
FEEDS FOR HORSES, SHEEP & CATTLE



SOME OF OUR PRODUCTS INCLUDE:

Bypass Drylick + Rumensin

A supplement designed to feed the rumen bugs and stimulate feed intake for sheep and cattle on a low quality roughage diet. Plenty of roughage is essential.

Bypass G + Rumensin

A green feed supplement for sheep and cattle. Helps reduce scouring on green crops or pasture, and increasing weight gains. Helps prevent bloat on legume pastures. Rumensin increases the efficiency of the energy available from all the feed consumed by the animal.

Bypass Feedlot concentrate

A Supplement to add to your own grain. Provides macro and micro ingredients including Urea.

For feed lotting sheep & cattle.

Use 50Kg of Bypass Feedlot Concentrate for each tonne of finished feed.

PRODUCT DOES NOT CONTAIN RESTRICTED ANIMAL MATERIAL



- ARE YOU FEEDLOTING ?
- DO YOUR STOCK NEED FINISHING ? BEFORE SALE
- AFTER A SUPPLEMENT TO ADD TO YOUR OWN GRAIN ?
- DO YOU HAVE COWS IN CALF ?
- ARE YOU WEANING CALVES ?
- SEVERE DRY CONDITIONS ?
- LUSH GREEN PASTURES ? OR IN BETWEEN ?

***WE HAVE THE PRODUCT
FOR YOUR STOCK***

**BYPASS STOCKFEEDS
&
SWEETBULK HORSEFEEDS**

ABN: 83077109767

PHONE: 02 68 431 933
EMAIL: glenda@sweetbulk.com

Lot 5 RAYLEIGH LOVEABULL L62 (P)

Tattoo: L62

Rego No: AHCL62

Born: 21/05/2015

ALLENDALE YACKA (AI) (P)
 ALLENDALE ANZAC E114 (P)
 ALLENDALE DAWN B22 (AI) (ET) (P)

Sire: **INJEMIRA ANZAC H003 (P)**

DEBARRY RUGGERO (S)
 INJEMIRA HAPPY DAY C097 (P)
 INJEMIRA HAPPY DAY A077 (H)
 SOUTH BUKALONG WALLACE 2 (P)
 YAVENVALE BENCHMARK B278 (P)
 YAVENVALE MISS MINERVA W051 (AI) (H)

Dam: **RAYLEIGH S BELLA J87 (P)**

COLUMBIAN U153 KINGSLEY Z05 (P)
 RAYLEIGH S KIRRILY G24 (AI) (P)
 RAYLEIGH S TIFFANY D54 (P)

May 2017 Hereford GROUP BREEDPLAN												
BW	200	400	600	MCW	Milk	SS	Cwt	EMA	Rib	RUMP	RBY%	IMF%
+4.9	+38	+58	+82	+64	+17	+2.7	+53	+3.6	+1.2	+1.9	+0.4	+0.6
69%	62%	64%	69%	58%	39%	70%	55%	46%	50%	55%	48%	47%
Selection Index Values:		S/Market: +\$105		Grass Fed Steer:+\$101			Grain Fed Steer:+\$118			EU: +\$115		

Traits Observed: CE,BWT,600WT,SS,FAT,EMA,IMF

Notes: A moderate and thick bull with great muscle pattern and mobility. A local trade type bull who would produce steers with some extra punch. EP 100/100.

Purchaser: Price \$:

Lot 6 RAYLEIGH LAWRENCE L82 (P)

Tattoo: L82

Rego No: AHCL82

Born: 10/06/2015

ALLENDALE YACKA (AI) (P)
 ALLENDALE ANZAC E114 (P)
 ALLENDALE DAWN B22 (AI) (ET) (P)

Sire: **INJEMIRA ANZAC H003 (P)**

DEBARRY RUGGERO (S)
 INJEMIRA HAPPY DAY C097 (P)
 INJEMIRA HAPPY DAY A077 (H)
 CANNAWIGRA COMMANDER Z51 (S)
 WHIM PARK DESTROYER D035 (AI) (S)
 NOROLLE V1 NIKKI Z78 (AI) (P)

Dam: **RAYLEIGH S EMERALD J37 (P)**

ALLENDALE POSEIDON Z110 (P)
 RAYLEIGH S POSIE D69 (P)
 RAYLEIGH S CAROL B4 (P)

May 2017 Hereford GROUP BREEDPLAN												
BW	200	400	600	MCW	Milk	SS	Cwt	EMA	Rib	RUMP	RBY%	IMF%
+7.5	+43	+70	+104	+97	+16	+2.3	+66	+3.8	-0.1	-0.3	+1.0	+0.3
56%	58%	62%	67%	58%	39%	71%	55%	46%	50%	55%	48%	47%
Selection Index Values:		S/Market: +\$101		Grass Fed Steer:+\$92			Grain Fed Steer:+\$105			EU: +\$110		

Traits Observed: CE,600WT,SS,FAT,EMA,IMF

Notes: An Injemira Anzac bull with loads of performance. This bull has length, lift and depth, whilst maintaining good muscle patterns and structural soundness. EP 100/100.

Purchaser: Price \$:

Lot 7 RAYLEIGH LEXUS L66 (P)

Tattoo: L66

Rego No: AHCL66

Born: 24/05/2015

KARINA CHERRY Z8 (P)
TYCOLAH H-BOMB (P)
TYCOLAH DIANA U52 (TW) (P)

Sire: **THE RANCH MARKSMAN H14 (P)**
BOWEN VINCENT V1 (S)
THE RANCH DUCHESS A37 (AI) (P)
THE RANCH DUCHESS X35 (P)

BOWEN VINCENT V1 (S)
DEBARRY TRIBULUS 2 (P)
DEBARRY TABITHA V48 (ET) (P)

Dam: **RAYLEIGH S TIFFANY F68 (P)**
COLUMBIAN SURVIVOR W45 (P)
RAYLEIGH S SHAMROCK A37 (P)
RAYLEIGH HALEY 51 P41 (P)

May 2017 Hereford GROUP BREEDPLAN												
BW	200	400	600	MCW	Milk	SS	Cwt	EMA	Rib	RUMP	RBY%	IMF%
+6.5	+34	+56	+79	+77	+14	+1.0	+44	+2.6	-0.4	-0.8	+1.0	+0.2
70%	64%	65%	69%	59%	40%	70%	55%	45%	49%	53%	47%	45%
Selection Index Values:				S/Market: +\$70		Grass Fed Steer: +\$62		Grain Fed Steer: +\$72		EU: +\$79		

Traits Observed: CE,BWT,600WT,SS,FAT,EMA,IMF

Notes: A long deep bodied The Ranch Marksmen son, who is beautifully made through the hind end. This fellow has natural thickness and a great muscle pattern. A very soft bull. A real all-rounder. EP 100/100.

Purchaser:

Price \$:.....

Lot 8 RAYLEIGH LANCE L44 (P)

Tattoo: L44

Rego No: AHCL44

Born: 10/05/2015

KARINA CHERRY Z8 (P)
TYCOLAH H-BOMB (P)
TYCOLAH DIANA U52 (TW) (P)

Sire: **THE RANCH MARKSMAN H14 (P)**
BOWEN VINCENT V1 (S)
THE RANCH DUCHESS A37 (AI) (P)
THE RANCH DUCHESS X35 (P)

BOWEN VINCENT V1 (S)
DEBARRY TRIBULUS 2 (P)
DEBARRY TABITHA V48 (ET) (P)

Dam: **RAYLEIGH L TIFFANY D15 (P)**
DAVENGER UPSTART (AI) (P)
RAYLEIGH L EMMA X76 (P)
RAYLEIGH SCARLET 17 T12 (P)

May 2017 Hereford GROUP BREEDPLAN												
BW	200	400	600	MCW	Milk	SS	Cwt	EMA	Rib	RUMP	RBY%	IMF%
+3.9	+26	+46	+63	+62	+14	+0.6	+39	+2.9	-0.8	-1.6	+1.7	-0.1
70%	65%	65%	70%	59%	39%	71%	56%	45%	50%	55%	48%	47%
Selection Index Values:				S/Market: +\$65		Grass Fed Steer: +\$60		Grain Fed Steer: +\$65		EU: +\$77		

Traits Observed: CE,BWT,600WT,SS,FAT,EMA,IMF

Notes: A well structured bull, with natural thickness and length. Great eye placement and softness. Scurred, EP 100/100.

Purchaser:

Price \$:.....

Lot 9 RAYLEIGH LIONEL L76 (P)

Tattoo: L76

Rego No: AHCL76

Born: 04/06/2015

KARINA CHERRY Z8 (P)
 TYCOLAH H-BOMB (P)
 TYCOLAH DIANA U52 (TW) (P)

Sire: **THE RANCH MARKSMAN H14 (P)**

BOWEN VINCENT V1 (S)
 THE RANCH DUCHESS A37 (AI) (P)
 THE RANCH DUCHESS X35 (P)

BOWEN VINCENT V1 (S)
 DEBARRY TRIBULUS 2 (P)
 DEBARRY TABITHA V48 (ET) (P)

Dam: **RAYLEIGH S TIFFANY G44 (P)**

EVESHAM KYLBURN (AI) (ET) (S)
 RAYLEIGH S KYLIE 8 W57 (P)
 RAYLEIGH ELLIE 18 R16 (P)

May 2017 Hereford GROUP BREEDPLAN													
BW	200	400	600	MCW	Milk	SS	Cwt	EMA	Rib	RUMP	RBY%	IMF%	
+5.8	+30	+51	+73	+72	+12	+1.7	+41	+2.8	-0.7	-1.2	+1.7	-0.3	
70%	64%	64%	69%	58%	37%	71%	55%	44%	48%	52%	46%	44%	
Selection Index Values:				S/Market: +\$67		Grass Fed Steer: +\$61		Grain Fed Steer: +\$64		EU: +\$78			

Traits Observed: CE,BWT,600WT,SS,FAT,EMA,IMF

Notes: A bull who carries himself well, with loads of performance. This sire has extra growth for age and a great muscle pattern. EP 100/100.

Purchaser: Price \$:

Lot 10 RAYLEIGH LYNDON L100 (P)

Tattoo: L100

Rego No: AHCL100

Born: 05/07/2015

KARINA CHERRY Z8 (P)
 TYCOLAH H-BOMB (P)
 TYCOLAH DIANA U52 (TW) (P)

Sire: **THE RANCH MARKSMAN H14 (P)**

BOWEN VINCENT V1 (S)
 THE RANCH DUCHESS A37 (AI) (P)
 THE RANCH DUCHESS X35 (P)
 SOUTH BUKALONG WALLACE 2 (P)

YAVENVALE BENCHMARK B278 (P)
 YAVENVALE MISS MINERVA W051 (AI) (H)

Dam: **RAYLEIGH L BELLA G90 (P)**

DEBARRY TRIBULUS 2 (P)
 RAYLEIGH L TIFFANY E42 (P)
 RAYLEIGH L UABBA Z74 (P)

May 2017 Hereford GROUP BREEDPLAN													
BW	200	400	600	MCW	Milk	SS	Cwt	EMA	Rib	RUMP	RBY%	IMF%	
+3.4	+27	+48	+68	+58	+18	+1.9	+40	+2.4	+0.5	+0.7	+0.5	+0.5	
69%	63%	63%	68%	57%	37%	70%	54%	45%	49%	53%	47%	46%	
Selection Index Values:				S/Market: +\$90		Grass Fed Steer: +\$86		Grain Fed Steer: +\$101		EU: +\$101			

Traits Observed: CE,BWT,600WT,SS,FAT,EMA,IMF

Notes: A very growthy younger bull. Smooth through the shoulders with spring of rib. Mother has a terrific udder. EP 100/100.

Purchaser: Price \$:

Lot 11 RAYLEIGH LIFTABULL L103 (P)

Tattoo: L103

Rego No: AHCL103

Born: 18/07/2015

REMITALL KEYNOTE 20X (IMP CAN) (P)
REMITALL BOOMER 46B (IMP CAN) (P)
REMITALL SALLYS LASS ET 120X (P)

Sire: **RAYLEIGH HERCULES H24 (AI) (P)**

DAVENGER UPSTART (AI) (P)
RAYLEIGH M UABBA Y47 (TW) (P)
RAYLEIGH LADY 7 Q112 (P)
CANNAWIGRA COMMANDER Z51 (S)
WHIM PARK DESTROYER D035 (AI) (S)
NOROLLE V1 NIKKI Z78 (AI) (P)

Dam: **RAYLEIGH T DESIRE G39 (P)**

DEBARRY TRIBULUS 2 (P)
RAYLEIGH T TIFFANY C72 (TW) (P)
RAYLEIGH NETTI X14 (P)

May 2017 Hereford GROUP BREEDPLAN												
BW	200	400	600	MCW	Milk	SS	Cwt	EMA	Rib	RUMP	RBY%	IMF%
+4.3	+29	+41	+60	+57	+15	+1.2	+36	+2.4	-0.5	-1.4	+0.9	-0.3
68%	63%	63%	67%	57%	43%	69%	54%	43%	47%	51%	45%	43%
Selection Index Values:				S/Market: +\$58		Grass Fed Steer: +\$53		Grain Fed Steer: +\$53		EU: +\$67		

Traits Observed: CE,BWT,600WT,SS,FAT,EMA,IMF

Notes: A very neat and tidy younger bull, with extra lift. Smooth through the shoulders and a great quiet nature. EP 100/100.

Purchaser: Price \$:

Lot 12 RAYLEIGH LEWIS L21 (P)

Tattoo: L21

Rego No: AHCL21

Born: 03/05/2015

ALLENDALE YACKA (AI) (P)
ALLENDALE ANZAC E114 (P)
ALLENDALE DAWN B22 (AI) (ET) (P)

Sire: **INJEMIRA ANZAC H003 (P)**

DEBARRY RUGGERO (S)
INJEMIRA HAPPY DAY C097 (P)
INJEMIRA HAPPY DAY A077 (H)
SOUTH BUKALONG WALLACE 2 (P)
YAVENVALE BENCHMARK B278 (P)
YAVENVALE MISS MINERVA W051 (AI) (H)

Dam: **RAYLEIGH C BELLA H98 (P)**

COLUMBIAN SURVIVOR W45 (P)
RAYLEIGH C SHAMROCK A32 (P)
RAYLEIGH C IRIS W2 (P)

May 2017 Hereford GROUP BREEDPLAN												
BW	200	400	600	MCW	Milk	SS	Cwt	EMA	Rib	RUMP	RBY%	IMF%
+5.4	+36	+55	+76	+57	+14	+2.4	+51	+4.9	+1.8	+2.8	+0.3	+1.0
68%	62%	63%	68%	57%	40%	70%	54%	44%	48%	52%	46%	44%
Selection Index Values:				S/Market: +\$101		Grass Fed Steer: +\$98		Grain Fed Steer: +\$120		EU: +\$112		

Traits Observed: BWT,600WT,SS,FAT,EMA,IMF

Notes: FEATURE LOT. This bull combines phenotype with an exceptional set of EBVs. He is a very mobile, moderate young sire, that is beautifully made from hip to pin. You can't help but admire his extreme muscle pattern and evenness of coverage from front to back. An extreme carcass bull with TOP SIRE POTENTIAL for any modern beef breeding operation. EP 100/100.

Purchaser: Price \$:

Lot 13 RAYLEIGH LUCAS L81 (P)

Tattoo: L81

Rego No: AHCL81

Born: 08/06/2015

ALLENDALE YACKA (AI) (P)
ALLENDALE ANZAC E114 (P)
ALLENDALE DAWN B22 (AI) (ET) (P)

Sire: **INJEMIRA ANZAC H003 (P)**

DEBARRY RUGGERO (S)
INJEMIRA HAPPY DAY C097 (P)
INJEMIRA HAPPY DAY A077 (H)
CANNAWIGRA COMMANDER Z51 (S)
WHIM PARK DESTROYER D035 (AI) (S)
NOROLLE V1 NIKKI Z78 (AI) (P)

Dam: **RAYLEIGH D DESIRE J40 (P)**

EBBX CALGARY (AI) (ET) (P)
RAYLEIGH B CAROL (P)
DEBARRY ADVANCE V42 (AI) (P)

May 2017 Hereford GROUP BREEDPLAN												
BW	200	400	600	MCW	Milk	SS	Cwt	EMA	Rib	RUMP	RBY%	IMF%
+6.4	+37	+60	+84	+78	+16	+2.5	+54	+4.3	+0.7	+0.7	+1.0	+0.6
69%	62%	64%	69%	59%	39%	71%	55%	46%	50%	55%	49%	47%
Selection Index Values:		S/Market: +\$90			Grass Fed Steer: +\$84			Grain Fed Steer: +\$100			EU: +\$101	

Traits Observed: CE,BWT,600WT,SS,FAT,EMA,IMF

Notes: Another very even Injemira Anzac son. Structurally sound, with great muscle patterns along the spine and through the hind quarter. Above breed average for all index values, EMA and fat EBVs. EP 100/100.

Purchaser: Price \$:.....

Lot 14 RAYLEIGH LIBIDO L97 (P)

Tattoo: L97

Rego No: AHCL97

Born: 27/06/2015

ALLENDALE YACKA (AI) (P)
ALLENDALE ANZAC E114 (P)
ALLENDALE DAWN B22 (AI) (ET) (P)

Sire: **INJEMIRA ANZAC H003 (P)**

DEBARRY RUGGERO (S)
INJEMIRA HAPPY DAY C097 (P)
INJEMIRA HAPPY DAY A077 (H)
SOUTH BUKALONG WALLACE 2 (P)
YAVENVALE BENCHMARK B278 (P)
YAVENVALE MISS MINERVA W051 (AI) (H)

Dam: **RAYLEIGH L BELLA J77 (P)**

RILO PARK UNSHAKEABLE (AI) (ET) (P)
RAYLEIGH L UNITY G41 (P)
RAYLEIGH L TIFFANY D007 (P)

May 2017 Hereford GROUP BREEDPLAN												
BW	200	400	600	MCW	Milk	SS	Cwt	EMA	Rib	RUMP	RBY%	IMF%
+5.7	+37	+57	+81	+59	+17	+2.1	+51	+4.5	+1.9	+2.8	+0.1	+1.2
67%	61%	63%	68%	58%	40%	70%	54%	45%	50%	54%	48%	47%
Selection Index Values:		S/Market: +\$107			Grass Fed Steer: +\$104			Grain Fed Steer: +\$131			EU: +\$118	

Traits Observed: CE,BWT,600WT,SS,FAT,EMA,IMF

Notes: A lovely, soft and sound, moderate young sire. This bull is very well put together, with smooth shoulders and length of quarter. Exceptional set of EBVs. Scurred, EP 100/100.

Purchaser: Price \$:.....

Lot 15 RAYLEIGH LEYLAND L8 (P)

Tattoo: L8

Rego No: AHCL8

Born: 23/04/2015

KARINA CHERRY Z8 (P)

TYCOLAH H-BOMB (P)

TYCOLAH DIANA U52 (TW) (P)

Sire: **THE RANCH MARKSMAN H14 (P)**

BOWEN VINCENT V1 (S)

THE RANCH DUCHESS A37 (AI) (P)

THE RANCH DUCHESS X35 (P)

BOWEN TORNADO Z260 (AI) (ET) (P)

RILO PARK UNSHAKEABLE (AI) (ET) (P)

BOWEN MATCHLESS L140 (AI) (P)

Dam: **RAYLEIGH L UNITY G89 (P)**

LJS 23C DEVIATE U101 (AI) (ET) (P)

RAYLEIGH L EVA A2 (AI) (P)

RAYLEIGH SALLY 31 U23 (P)

May 2017 Hereford GROUP BREEDPLAN

BW	200	400	600	MCW	Milk	SS	Cwt	EMA	Rib	RUMP	RBY%	IMF%	
+3.3	+25	+46	+64	+67	+10	+1.5	+39	+3.0	-1.2	-2.1	+1.8	+0.3	
69%	64%	63%	68%	57%	39%	70%	54%	44%	47%	51%	46%	44%	
Selection Index Values:				S/Market: +\$72			Grass Fed Steer: +\$67		Grain Fed Steer: +\$79		EU: +\$87		

Traits Observed: BWT,600WT,SS,FAT,EMA,IMF

Notes: A moderate bull with an exceptional hindquarter. Great eye placement. Perfect for local trade type markets. EP 100/100.

Purchaser: Price \$:.....

Lot 16 RAYLEIGH LONGITUDE L68 (TW) (P)

Tattoo: L68

Rego No: AHCL68

Born: 28/05/2015

KARINA CHERRY Z8 (P)

TYCOLAH H-BOMB (P)

TYCOLAH DIANA U52 (TW) (P)

Sire: **THE RANCH MARKSMAN H14 (P)**

BOWEN VINCENT V1 (S)

THE RANCH DUCHESS A37 (AI) (P)

THE RANCH DUCHESS X35 (P)

JSF 37 271 DEVO 23C (IMP CAN) (P)

LJS 23C DEVIATE U101 (AI) (ET) (P)

MERAWAH CUPID 98 (AI) (P)

Dam: **RAYLEIGH L EVA A63 (AI) (P)**

DAVENGER UPSTART (AI) (P)

RAYLEIGH L UABBA Y4 (P)

RAYLEIGH SALLY 6 S58 (P)

May 2017 Hereford GROUP BREEDPLAN

BW	200	400	600	MCW	Milk	SS	Cwt	EMA	Rib	RUMP	RBY%	IMF%	
+5.6	+30	+53	+77	+82	+12	+1.6	+47	+3.8	-1.9	-3.2	+2.9	-0.6	
69%	63%	63%	67%	57%	43%	68%	54%	44%	48%	52%	47%	46%	
Selection Index Values:				S/Market: +\$67			Grass Fed Steer: +\$59		Grain Fed Steer: +\$59		EU: +\$80		

Traits Observed: BWT,600WT,SS,FAT,EMA,IMF

Notes: A moderate young sire with great muscle patterns and spring of rib. A very neat and tidy bull, out of a great old cow. Twin, EP 100/100.

Purchaser: Price \$:.....



Lot 6



Lot 8



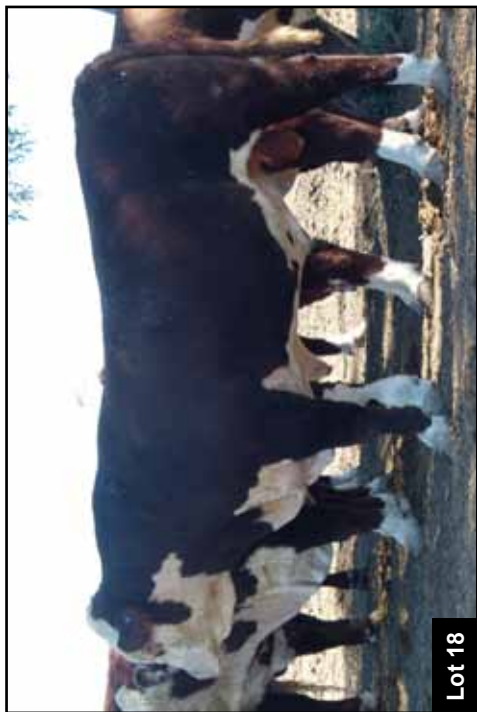
Lot 5



Lot 7









**RUMEVITE
BEEF FINISHER
PELLET**

*Pelleted grain ration for lot feeding
cattle weighing greater than 300kg
live weight.*



**RUMEVITE
FEEDLOT MINERALS
CONCENTRATE**

*A mineral and vitamin concentrate for
mixing with crushed grains, vegetable
protein source and roughage to provide
a balanced ration for lot feeding cattle.*

NARRABRI FARM CENTRE

Eleanor Street, Narrabri

Phone: 6792 2352

www.narrabrifarm.com.au



*Carrying a comprehensive range of Ridley
Agriproducts stockfeeds and supplements.*



**RUMEVITE
BEEF WEANER
PELLET**

*A pelleted grain ration for
supplementing beef weaners or
lot feeding cattle weighing
between 120-300kg live weight.*



**RUMEVITE
FEEDLOT 80
CONCENTRATE**

*A protein, mineral and vitamin
concentrate designed for mixing with
crushed grain and roughage to provide
a balanced ration for lot feeding cattle.*

Lot 17 RAYLEIGH LANDCRUISER L84 (P)

Tattoo: L84

Rego No: AHCL84

Born: 11/06/2015

SOUTH BUKALONG WALKER 6 (AI) (P)
SOUTH BUKALONG WALLACE 2 (P)
SOUTH BUKALONG VICTORIA 152 (P)

Sire: **YAVENVALE BENCHMARK B278 (P)**

TARCOMBE CAPTAIN (H)
YAVENVALE MISS MINERVA W051 (AI) (H)
GVPC MISS MINERVA P125 (H)
BOWEN VINCENT V1 (S)
DEBARRY TRIBULUS 2 (P)
DEBARRY TABITHA V48 (ET) (P)

Dam: **RAYLEIGH J TIFFANY D73 (P)**

COLUMBIAN SURVIVOR W45 (P)
RAYLEIGH J SHAMROCK Z18 (P)
RAYLEIGH FELICITY 26 N56 (P)

May 2017 Hereford GROUP BREEDPLAN

BW	200	400	600	MCW	Milk	SS	Cwt	EMA	Rib	RUMP	RBY%	IMF%
+1.5	+24	+34	+45	+16	+17	+2.0	+30	+2.8	+3.9	+6.2	-1.8	+1.3
70%	66%	66%	70%	61%	54%	71%	58%	49%	53%	57%	51%	51%
Selection Index Values:		S/Market: +\$97		Grass Fed Steer: +\$101			Grain Fed Steer: +\$123			EU: +\$105		

Traits Observed: CE,BWT,600WT,SS,FAT,EMA,IMF

Notes: A full brother to 2016 top priced bull. A very smooth and even young sire, with extra length. Out of a top old cow. Should suit heifers. EP 100/100.

Purchaser:

Price \$:

Lot 18 RAYLEIGH LATITUDE L69 (TW) (P)

Tattoo: L69

Rego No: AHCL69

Born: 28/05/2015

KARINA CHERRY Z8 (P)
TYCOLAH H-BOMB (P)
TYCOLAH DIANA U52 (TW) (P)

Sire: **THE RANCH MARKSMAN H14 (P)**

BOWEN VINCENT V1 (S)
THE RANCH DUCHESS A37 (AI) (P)
THE RANCH DUCHESS X35 (P)
JSF 37 271 DEVO 23C (IMP CAN) (P)
LJS 23C DEVIATE U101 (AI) (ET) (P)
MERAWAH CUPID 98 (AI) (P)

Dam: **RAYLEIGH L EVA A63 (AI) (P)**

DAVENGER UPSTART (AI) (P)
RAYLEIGH L UABBA Y4 (P)
RAYLEIGH SALLY 6 S58 (P)

May 2017 Hereford GROUP BREEDPLAN

BW	200	400	600	MCW	Milk	SS	Cwt	EMA	Rib	RUMP	RBY%	IMF%
+5.4	+30	+51	+74	+82	+12	+1.9	+43	+2.8	-2.0	-3.3	+2.6	-0.7
69%	63%	63%	67%	57%	43%	68%	54%	44%	48%	52%	47%	46%
Selection Index Values:		S/Market: +\$63		Grass Fed Steer: +\$55			Grain Fed Steer: +\$52			EU: +\$76		

Traits Observed: BWT,600WT,SS,FAT,EMA,IMF

Notes: Twin brother to Lot 16. A very correct and balanced bull out of a top old cow. This bull should continue to develop. EP 100/100.

Purchaser:

Price \$:

Lot 19 RAYLEIGH LEGACY L114 (P)

Tattoo: L114

Rego No: AHCL114

Born: 04/08/2015

SOUTH BUKALONG WALKER 6 (AI) (P)
SOUTH BUKALONG WALLACE 2 (P)
SOUTH BUKALONG VICTORIA 152 (P)

Sire: **YAVENVALE BENCHMARK B278 (P)**

TARCOMBE CAPTAIN (H)
YAVENVALE MISS MINERVA W051 (AI) (H)
GVPC MISS MINERVA P125 (H)
BOWEN TORNADO Z260 (AI) (ET) (P)
RILO PARK UNSHAKEABLE (AI) (ET) (P)
BOWEN MATCHLESS L140 (AI) (P)

Dam: **RAYLEIGH L UNITY G41 (P)**

DEBARRY TRIBULUS 2 (P)
RAYLEIGH L TIFFANY D007 (P)
RAYLEIGH L UABBA X80 (P)

May 2017 Hereford GROUP BREEDPLAN

BW	200	400	600	MCW	Milk	SS	Cwt	EMA	Rib	RUMP	RBY%	IMF%
+2.5	+25	+35	+48	+28	+16	+1.2	+27	+1.8	+2.3	+3.4	-1.1	+1.0
68%	65%	66%	69%	60%	53%	71%	57%	48%	51%	55%	50%	49%
Selection Index Values:		S/Market: +\$84		Grass Fed Steer: +\$85			Grain Fed Steer: +\$104			EU: +\$94		

Traits Observed: CE,BWT,600WT,SS,FAT,EMA,IMF

Notes: One of the youngest bulls in this years sale. A lovely soft Yavenvale Benchmark son, who is very clean through the front end. An easy doing bull, with a very low birth weight. Should suit heifers. EP 100/90.

Purchaser:

Price \$:

Lot 20 RAYLEIGH LEANDER L122 (P)

Tattoo: L122

Rego No: AHCL122

Born: 25/08/2015

ALLENDALE YACKA (AI) (P)
ALLENDALE ANZAC E114 (P)
ALLENDALE DAWN B22 (AI) (ET) (P)

Sire: **INJEMIRA ANZAC H003 (P)**

DEBARRY RUGGERO (S)
INJEMIRA HAPPY DAY C097 (P)
INJEMIRA HAPPY DAY A077 (H)
SOUTH BUKALONG WALLACE 2 (P)
YAVENVALE BENCHMARK B278 (P)
YAVENVALE MISS MINERVA W051 (AI) (H)

Dam: **RAYLEIGH L BELLA H49 (P)**

DEBARRY TRIBULUS 2 (P)
RAYLEIGH L TIFFANY E31 (P)
RAYLEIGH L EVA A63 (AI) (P)

May 2017 Hereford GROUP BREEDPLAN

BW	200	400	600	MCW	Milk	SS	Cwt	EMA	Rib	RUMP	RBY%	IMF%
+4.3	+33	+50	+69	+50	+16	+2.2	+48	+4.6	+1.5	+2.2	+0.5	+0.6
54%	55%	59%	64%	55%	38%	67%	53%	43%	46%	50%	45%	44%
Selection Index Values:		S/Market: +\$91		Grass Fed Steer: +\$89			Grain Fed Steer: +\$104			EU: +\$101		

Traits Observed: CE,BWT,600WT,SS,FAT,EMA,IMF

Notes: The youngest bull in the sale. A soft and easy doing, moderate framed sire with great fleshing. Great set of EBVs. EP 100/100.

Purchaser:

Price \$:

Lot 21 RAYLEIGH LARAMIE L72 (TW) (P)

Tattoo: L72

Rego No: AHCL72

Born: 29/05/2015

REMITALL KEYNOTE 20X (IMP CAN) (P)
REMITALL BOOMER 46B (IMP CAN) (P)
REMITALL SALLYS LASS ET 120X (P)

Sire: **RAYLEIGH HERCULES H24 (AI) (P)**

DAVENGER UPSTART (AI) (P)
RAYLEIGH M UABBA Y47 (TW) (P)
RAYLEIGH LADY 7 Q112 (P)

BOWEN VINCENT V1 (S)
DEBARRY TRIBULUS 2 (P)
DEBARRY TABITHA V48 (ET) (P)

Dam: **RAYLEIGH S TIFFANY D58 (P)**

DAVENGER UPSTART (AI) (P)
RAYLEIGH S UABBA Y18 (P)
RAYLEIGH ELLIE 18 R16 (P)

May 2017 Hereford GROUP BREEDPLAN													
BW	200	400	600	MCW	Milk	SS	Cwt	EMA	Rib	RUMP	RBY%	IMF%	
+4.0	+28	+39	+57	+50	+15	+0.6	+36	+2.3	-0.2	-1.1	+0.4	+0.0	
68%	63%	62%	66%	56%	46%	67%	53%	43%	46%	49%	44%	43%	
Selection Index Values:				S/Market: +\$55			Grass Fed Steer: +\$51		Grain Fed Steer: +\$55		EU: +\$63		

Traits Observed: BWT,600WT,SS,FAT,EMA,IMF

Notes: Another smooth and even Rayleigh Hercules son, with some extra frame. Good hooded eye, should suit heifer. EP 100/100.

Purchaser: Price \$:

Lot 22 RAYLEIGH LEONARD L25 (P)

Tattoo: L25

Rego No: AHCL25

Born: 04/05/2015

SOUTH BUKALONG WALKER 6 (AI) (P)
SOUTH BUKALONG WALLACE 2 (P)
SOUTH BUKALONG VICTORIA 152 (P)

Sire: **YAVENVALE BENCHMARK B278 (P)**

TARCOMBE CAPTAIN (H)
YAVENVALE MISS MINERVA W051 (AI) (H)
GVPC MISS MINERVA P125 (H)

HARVIE LADIES MAN 4L (IMP CAN) (P)
RAYLEIGH ALBERTA A4 (AI) (P)
RAYLEIGH S. EVA X3 (AI) (P)

Dam: **RAYLEIGH L ALYSIA F72 (P)**

DEBARRY TRIBULUS 2 (P)
RAYLEIGH L TIFFANY D39 (P)
RAYLEIGH SUZIE 5 V31 (P)

May 2017 Hereford GROUP BREEDPLAN													
BW	200	400	600	MCW	Milk	SS	Cwt	EMA	Rib	RUMP	RBY%	IMF%	
-0.2	+19	+30	+45	+21	+16	+2.8	+30	+2.4	+3.5	+5.5	-1.7	+1.5	
70%	66%	66%	70%	61%	52%	71%	58%	48%	52%	57%	51%	50%	
Selection Index Values:				S/Market: +\$102			Grass Fed Steer: +\$106		Grain Fed Steer: +\$131		EU: +\$112		

Traits Observed: CE,BWT,600WT,SS,FAT,EMA,IMF

Notes: A moderate bull, with great length of body and thickness. A local trade bull that should suit heifers. EP 100/100.

Purchaser: Price \$:

Lot 23 RAYLEIGH LORENZO L28 (TW) (P)

Tattoo: L28

Rego No: AHCL28

Born: 05/05/2015

REMITALL KEYNOTE 20X (IMP CAN) (P)
REMITALL BOOMER 46B (IMP CAN) (P)
REMITALL SALLYS LASS ET 120X (P)

Sire: **RAYLEIGH HERCULES H24 (AI) (P)**

DAVENGER UPSTART (AI) (P)
RAYLEIGH M UABBA Y47 (TW) (P)
RAYLEIGH LADY 7 Q112 (P)

BOWEN VINCENT V1 (S)
DEBARRY TRIBULUS 2 (P)
DEBARRY TABITHA V48 (ET) (P)

Dam: **RAYLEIGH L TIFFANY D26 (P)**

DAVENGER UPSTART (AI) (P)
RAYLEIGH L UABBA Z87 (P)
RAYLEIGH AMOROUS 17 U61 (P)

May 2017 Hereford GROUP BREEDPLAN												
BW	200	400	600	MCW	Milk	SS	Cwt	EMA	Rib	RUMP	RBY%	IMF%
+2.9	+23	+30	+41	+33	+13	+1.1	+21	+1.5	+1.0	+0.9	-0.6	+0.2
68%	63%	63%	67%	57%	46%	67%	54%	43%	47%	50%	45%	44%
Selection Index Values:		S/Market: +\$50		Grass Fed Steer: +\$48			Grain Fed Steer: +\$53			EU: +\$56		

Traits Observed: BWT,600WT,SS,FAT,EMA,IMF

Notes: A structurally sound young sire, that is well put together through the shoulders and hind quarter. A bull with presence and mobility. Should suit heifers. EP 100/100.

Purchaser:

Price \$:

Lot 24 RAYLEIGH LAWSON L63 (P)

Tattoo: L63

Rego No: AHCL63

Born: 22/05/2015

SOUTH BUKALONG WALKER 6 (AI) (P)
SOUTH BUKALONG WALLACE 2 (P)
SOUTH BUKALONG VICTORIA 152 (P)

Sire: **YAVENVALE BENCHMARK B278 (P)**

TARCOMBE CAPTAIN (H)
YAVENVALE MISS MINERVA W051 (AI) (H)
GVPC MISS MINERVA P125 (H)

BOWEN VINCENT V1 (S)
DEBARRY TRIBULUS 2 (P)
DEBARRY TABITHA V48 (ET) (P)

Dam: **RAYLEIGH L TIFFANY D007 (P)**

DAVENGER UPSTART (AI) (P)
RAYLEIGH L UABBA X80 (P)
RAYLEIGH ELLIE 11 Q129 (P)

May 2017 Hereford GROUP BREEDPLAN												
BW	200	400	600	MCW	Milk	SS	Cwt	EMA	Rib	RUMP	RBY%	IMF%
+1.1	+19	+28	+39	+24	+17	-0.1	+25	+2.4	+1.3	+1.9	+0.1	+0.4
70%	66%	67%	71%	61%	55%	72%	58%	48%	52%	56%	50%	50%
Selection Index Values:		S/Market: +\$68		Grass Fed Steer: +\$69			Grain Fed Steer: +\$77			EU: +\$76		

Traits Observed: CE,BWT,600WT,SS,FAT,EMA,IMF

Notes: A tidy bull, with smooth shoulders and great length of body. Should suit heifers. EP 100/100.

Purchaser:

Price \$:

Lot 25 RAYLEIGH LAFFAYETTE L26 (P)

Tattoo: L26

Rego No: AHCL26

Born: 04/05/2015

SOUTH BUKALONG WALKER 6 (AI) (P)
 SOUTH BUKALONG WALLACE 2 (P)
 SOUTH BUKALONG VICTORIA 152 (P)

Sire: **YAVENVALE BENCHMARK B278 (P)**

TARCOMBE CAPTAIN (H)
 YAVENVALE MISS MINERVA W051 (AI) (H)
 GVPC MISS MINERVA P125 (H)
 BOWEN TORNADO Z260 (AI) (ET) (P)
 RILO PARK UNSHAKEABLE (AI) (ET) (P)
 BOWEN MATCHLESS L140 (AI) (P)

Dam: **RAYLEIGH M UNITY G63 (TW) (P)**

COLUMBIAN SURVIVOR W45 (P)
 RAYLEIGH M SHAMROCK Z52 (P)
 RAYLEIGH AMOROUS 27 V12 (P)

May 2017 Hereford GROUP BREEDPLAN

BW	200	400	600	MCW	Milk	SS	Cwt	EMA	Rib	RUMP	RBY%	IMF%
+1.4	+21	+29	+37	+20	+14	+1.8	+19	+1.3	+2.6	+3.9	-1.5	+1.2
70%	65%	66%	70%	60%	51%	71%	57%	48%	52%	56%	50%	49%
Selection Index Values:		S/Market: +\$78		Grass Fed Steer: +\$81			Grain Fed Steer: +\$103			EU: +\$89		

Traits Observed: CE,BWT,600WT,SS,FAT,EMA,IMF

Notes: A smooth shouldered, very tidy bull. Great temperament. Should suit heifers. EP 100/50.

Purchaser: Price \$:.....

Lot 26 RAYLEIGH LINDSAY L27 (P)

Tattoo: L27

Rego No: AHCL27

Born: 04/05/2015

SOUTH BUKALONG WALKER 6 (AI) (P)
 SOUTH BUKALONG WALLACE 2 (P)
 SOUTH BUKALONG VICTORIA 152 (P)

Sire: **YAVENVALE BENCHMARK B278 (P)**

TARCOMBE CAPTAIN (H)
 YAVENVALE MISS MINERVA W051 (AI) (H)
 GVPC MISS MINERVA P125 (H)
 BOWEN VINCENT V1 (S)
 DEBARRY TRIBULUS 2 (P)
 DEBARRY TABITHA V48 (ET) (P)

Dam: **RAYLEIGH L TIFFANY D52 (P)**

COLUMBIAN SURVIVOR W45 (P)
 RAYLEIGH L SHAMROCK A10 (P)
 RAYLEIGH SALLY 6 S58 (P)

May 2017 Hereford GROUP BREEDPLAN

BW	200	400	600	MCW	Milk	SS	Cwt	EMA	Rib	RUMP	RBY%	IMF%
+0.4	+20	+31	+39	+16	+18	+2.1	+27	+2.3	+3.1	+4.9	-1.3	+0.9
70%	66%	67%	71%	61%	53%	72%	58%	49%	53%	57%	52%	51%
Selection Index Values:		S/Market: +\$88		Grass Fed Steer: +\$91			Grain Fed Steer: +\$107			EU: +\$97		

Traits Observed: CE,BWT,600WT,SS,FAT,EMA,IMF

Notes: A smooth bull, with great evenness of coverage, length and laid in shoulders. Should suit heifer. EP 100/100.

Purchaser: Price \$:.....



**THOUSANDS OF FARMERS.
ONE SPECIALIST BROKER.**



AgriRisk

For all your farm & crop insurance
requirements call us:

Tamworth 02 6765 1400

or visit us at: www.agririsk.com.au



FOR OUR FARMERS, IT'S MORE THAN A BUSINESS, *it's a way of life.*

We see the value in long-term relationships, and we're committed to agribusiness today and into the future. With more local Agribusiness Managers on the ground, there's always someone to help you navigate business challenges and realise your opportunities.

Talk to your local NAB Regional Agribusiness Manager today.

James Pitman 02 6790 6868

Emily Colless 02 6790 6866

Will Guest 02 6790 6870

Tom Mort 02 6790 6872

nab.com.au/agribusiness

Lot 28 PICK OF THE DROP FEMALE

To mark 60 years of breeding for Raleigh, we are offering the choice between our two pick heifers from the 2016 calving year. The successful purchaser will be given the choice between one of these two females. This is a unique opportunity to add top end genetics and quality into any herd. Both heifers are sired by The Ranch Marksman, out of strong Yavenville Benchmark females. They combine phenotype with nicely balanced sets of EBVs. Each heifer is very well structured, with length of body, natural thickness and a great head and eye.

28A RAYLEIGH S MARVEL M6 (P)

Tattoo: M006

Rego No: AHCM006

Born: 02/05/2016

KARINA CHERRY Z8 (P)
 TYCOLAH H-BOMB (P)
 TYCOLAH DIANA U52 (TW) (P)

Sire: THE RANCH MARKSMAN H14 (P)

BOWEN VINCENT V1 (S)
 THE RANCH DUCHESS A37 (AI) (P)
 THE RANCH DUCHESS X35 (P)
 SOUTH BUKALONG WALLACE 2 (P)
 YAVENVALE BENCHMARK B278 (P)

YAVENVALE MISS MINERVA W051 (AI) (H)

Dam: RAYLEIGH S BELLA G74 (P)

COLUMBIAN SURVIVOR W45 (P)
 RAYLEIGH S SHAMROCK Z47 (P)
 RAYLEIGH AMOROUS 6 T67 (P)

May 2017 Hereford GROUP BREEDPLAN												
BW	200	400	600	MCW	Milk	SS	Cwt	EMA	Rib	RUMP	RBY%	IMF%
+3.3	+27	+48	+64	+55	+14	+1.7	+40	+3.2	+0.6	+1.0	+0.6	+0.5
55%	59%	55%	55%	46%	38%	48%	46%	34%	38%	40%	36%	38%
Selection Index Values:		S/Market: +\$86		Grass Fed Steer: +\$84			Grain Fed Steer: +\$98			EU: +\$98		

Traits Observed: 200WT

Notes: M006 is a very feminine female, with some extra length. A well put together heifer, with great evenness of cover and spring of rib.

28B RAYLEIGH L MARVEL M18 (P)

Tattoo: M018

Rego No: AHCM018

Born: 13/05/2016

KARINA CHERRY Z8 (P)
 TYCOLAH H-BOMB (P)
 TYCOLAH DIANA U52 (TW) (P)

Sire: THE RANCH MARKSMAN H14 (P)

BOWEN VINCENT V1 (S)
 THE RANCH DUCHESS A37 (AI) (P)
 THE RANCH DUCHESS X35 (P)
 SOUTH BUKALONG WALLACE 2 (P)
 YAVENVALE BENCHMARK B278 (P)

YAVENVALE MISS MINERVA W051 (AI) (H)

Dam: RAYLEIGH L BELLA G112 (P)

DEBARRY TRIBULUS 2 (P)
 RAYLEIGH L TIFFANY D26 (P)
 RAYLEIGH L UABBA Z87 (P)

May 2017 Hereford GROUP BREEDPLAN												
BW	200	400	600	MCW	Milk	SS	Cwt	EMA	Rib	RUMP	RBY%	IMF%
+3.9	+28	+49	+69	+58	+15	+1.7	+41	+3.0	+0.5	+0.7	+0.8	+0.5
55%	59%	54%	55%	47%	37%	49%	46%	36%	40%	43%	38%	40%
Selection Index Values:		S/Market: +\$89		Grass Fed Steer: +\$86			Grain Fed Steer: +\$102			EU: +\$101		

Traits Observed: 200WT

Notes: M018 offers that bit of extra thickness and fleshing. A very mobile heifer that is beautifully made from hip to pin.

Purchaser:

Price \$:



Lot 28A



Lot 28B



Lot 29 HEIFER LOT

AHCM076 – Rayleigh S Kara M76
AHCM019 – Rayleigh L Helen M19
AHCM012 – Rayleigh S Marvel M12

Notes: M076 by Mountain Valley Karabar K203.
M019 by Rayleigh Hercules H24.
M012 by The Ranch Marksman H14.

Purchaser: **Price \$:**.....

Lot 30 HEIFER LOT

AHCM025 – RAYLEIGH S HELEN M25
AHCM030 – RAYLEIGH S HELEN M30
AHCM064 – RAYLEIGH B KARA M64

Notes: M025 by Rayleigh Hercules H24.
M030 by Rayleigh Hercules H24.
M064 by Mountain Valley Karabar K203.

Purchaser: **Price \$:**.....

Lot 31 HEIFER LOT

AHCM070 – Rayleigh O Helen M70
AHCM072 – Rayleigh S Kara M72
AHCM045 – Rayleigh L Helen M45

Notes: M070 by Rayleigh Hercules H24.
M072 by Mountain Valley Karabar K203.
M045 by Rayleigh Hercules H24.

Purchaser: **Price \$:**.....

Lot 32 HEIFER LOT

AHCM0109 – Rayleigh L Ruby M109
AHCM094 – Rayleigh S Ruby M94
AHCM096 – Rayleigh T Ruby M96

Notes: M0109 by Days Robin Hood J183.
M094 by Days Robin Hood J183.
M096 by Days Robin Hood J183.

Purchaser: **Price \$:**.....

Lot 33 HEIFER LOT

AHCM0104 – Rayleigh T Marvel M104
AHCM090 – Rayleigh L Ruby M90
AHCM047 – Rayleigh L Marvel M47

Notes: M0104 by The Ranch Marksman H14.
M090 by Days Robin Hood J183.
M047 by The Ranch Marksman H14.

Purchaser: **Price \$:**.....

Lot 34 HEIFER LOT

AHCM044 – Rayleigh C Helen M44
AHCM015 – Rayleigh L Helen M15
AHCM083 – Rayleigh E Ruby M83

Notes: M044 by Rayleigh Hercules H24
M015 by Rayleigh Hercules H24.
M083 by Days Robin Hood J183.

Purchaser: **Price \$:**.....

Lot 35 HEIFER LOT

AHCM093 – Rayleigh L Ruby M93
AHCM0103 – Rayleigh L Marvel M103
AHCM082 – Rayleigh L Ruby M82

Notes: M093 by Days Robin Hood J183.
M0103 by The Ranch Marksman H14.
M082 by Days Robin Hood J183.

Purchaser: **Price \$:**.....



Thanks to Kirra Kelly - Fairfax Agricultural Media

NOTES:

Allflex®

Identify the Difference



Contact our friendly Customer Service Team
1300 138 247
 www.allflex.com.au

Proven & Trusted





RAYLEIGH

POLL HEREFORDS

EST. 1957

The Holcombe family would like to thank all clients and prospective purchasers for their support of our Annual Bull Sale and Open Day.

We would like to wish you all success in the upcoming sale. Lunch will be available during the day and please stay on after the sale for a drink or two to help celebrate our 60 years of breeding Poll Hereford cattle.